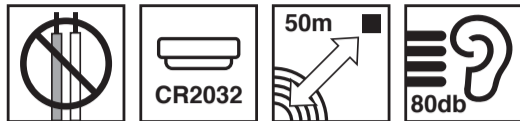
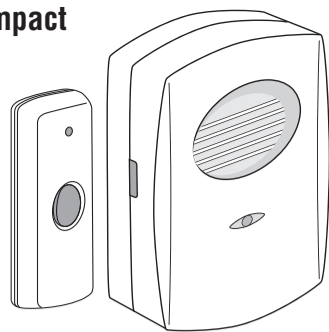


Please read and retain for future reference Compact Plug in Door Chime (54665)

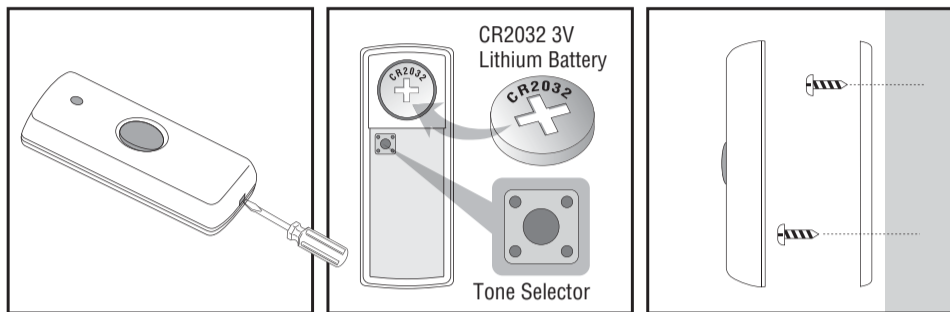
No wiring is required for the Compact Plug In Door Chime. When the Push Button is pressed, it sends a signal to the Chime Unit that activates the chime. The operating range is up to 50 metres (165ft. approx) depending on the line of sight. However, the range of the wire free signal will be reduced if the signal is transmitted through a number of walls or ceilings.

Metal and reinforced UPVC doorframes will also reduce the operating range.



Push Button Unit

1 x 3 volt Lithium battery (CR2032) has been installed. Your Push Button is ready to use.



To change the Battery

Remove the back cover by using a small, flat screwdriver push in the tab on the bottom. Lift out the old battery and insert 1 x 3 volt Lithium battery (CR2032), ensuring the positive (+) side is facing you. Refit the back plate.

To Mount

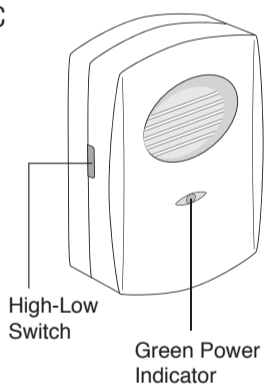
Use the double-sided pad supplied. Alternatively punch out the 2 holes on the back plate and use this as a template to mark the fixing position. Drill holes and secure the back plate with the screws and wall plugs supplied. Fix the front on the back plate.

Caution - Do not punch out the holes if the screw fixing method is not being used, as this will affect the weather resistance of the unit.

Door Chime Unit

The Door Chime unit is powered by A/C mains (220-240 volts AC 50hz). Simply plug into a convenient 13-amp socket, and it is ready to use.

When first plugged in and the power switched on turned on a double beep will be heard and a green power indicator on the front will light up. The volume can be adjusted by using the High-Low switch located on the side of the chime.



Important

The Compact Plug in Door Chime is a sensitive electronic product and the following precautions should be followed.

- The Chime Unit should only be used indoors.
- Do not mount the Push Button unit on any metal or reinforced UPVC doorframes as this will reduce the operating range.
- Do not expose the Door Chime unit to direct sunlight or moisture.
- If leaving the Push Button or Chime Unit for long periods, unplug the Chime Unit and remove the battery from the Push Button and store safely.
- Unplug the Chime Unit from the wall socket before setting the channel.
- Please dispose of old, defective batteries in an environmentally friendly manner in accordance with relevant legislation.

Warranty: This unit is guaranteed against faulty parts or workmanship for a period of one year from date of purchase. The guarantee does not cover batteries, damage caused by battery leakage, damage caused by incorrect installation, or physical damage to the casing.

This guarantee does not affect your statutory rights.



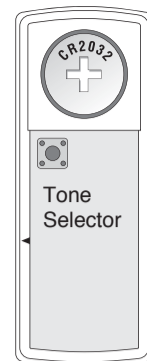
This product is supplied with 1 x CR2032 Lithium battery. It should be removed prior to disposal of the Bell Push. Help the environment by disposing of your product and battery responsibly. The wheelie bin symbols indicate the product and batteries must not be disposed of in the domestic waste as they contain substances which can be damaging to the environment and health. Please use designated collection points or recycling facilities when disposing of the item or batteries. More information can be found on: <http://www.recycle-more.co.uk>; www.recyclenow.com

Tone Set Up

The tone selector is a small black button located inside the Push Button unit, below of the battery compartment, marked with the letter "S". The tone is pre-set at the factory to the "Westminster" chime. If you wish to change it to one of the other seven tones, press and release the button and a tone will be heard from the Door Chime unit. Continue pressing and releasing the button until the desired tone is heard. The last one heard is the one retained in the units memory.

- | | |
|------------------------|-----------------------|
| 1. Westminster | 5. Banjo on my knee |
| 2. Ding Dong Ding Dong | 6. Twinkle Twinkle |
| 3. Telephone | 7. It's a small world |
| 4. Circus Theme | 8. Dog barking |

Push Button



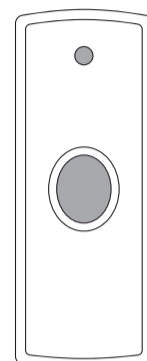
Channel Set Up

The unit comes from the factory on a pre-set channel. However should your door chime activate intermittently or for no apparent reason, it is possible that another unit is operating nearby on the same channel.

To change the channel

The door chime has a self learning channel feature so no adjustments are required. Simply unplug the Chime Unit from the socket, and leave to rest for 60 seconds.

Remove and re-insert the battery in the Push Button. Plug the Chime Unit back in and a double beep will be heard. Press the Push Button to confirm the new code is working. Should you need to change channels, this process can be followed many times as there are over 250 different channels available.



Push Button

Optional

Additional Push Button units may be purchased and installed at other locations i.e. the back door etc. This can then be adjusted to a different tone so that the source of the chime can be identified.

Trouble Shooting and User hints

Problem	Possible causes	Suggested remedy
Chime does not sound when Push Button pressed.	1. Units out of range, max 50 metres. 2. Push Button and Chime Units not on the same channel. 3. Battery needs replacing in Push Button.	1. Move the Chime Unit closer to the Push Button unit. 2. Check the channel Set Up. Unplug Chime Unit and rest for 60 seconds. 3. Replace battery.
Chime sounds without Push Button being pressed.	A similar wireless product is being used on the same channel.	Change channel. See Channel Set Up.

Important note: There are no user serviceable parts in the unit; do not attempt to open the unit to effect repairs.

Specification

Push Button

Power : 1 x 3 volt Lithium battery CR2032 (included)
Consumption : 9.0mA - ON / 0.003mA - OFF

Chime unit

Power : A/C mains (220-240 volt AC 50Hz)
Operating Temperature : -10°C to +45°C
Operating Distance : 50 metres (165 ft approx.) line of sight
Selectable Tones : 8
Channels : 256 (chime unit self learning)

R2 Device - device where the sound output is created by the initial operation of the control and where the period of sound output continues for designed duration irrespective of condition of the control.

Uni-Com (Global) Ltd.
1 & 2 Enterprise Way
Edenbridge
Kent
TN8 6EW



Symbol indicating separate collection for electrical and electronic equipment.



CE0681

Made in China