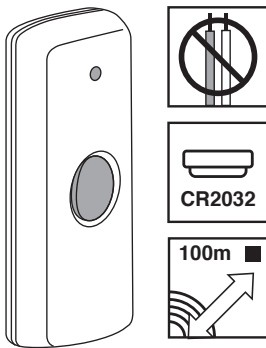


Wire-Free Bell Push (54580)

Suitable for use with all Uni-Com Wire-Free Door Chimes. Please read and retain these instructions for future reference. When the Push Button is pressed, it sends a wire free signal to your Door Chime that activates the chime sound. The range of the wire free signal will be reduced if the signal is transmitted through a number of walls or ceilings. Metal and UPVC reinforced doorframes will also reduce the operating range.



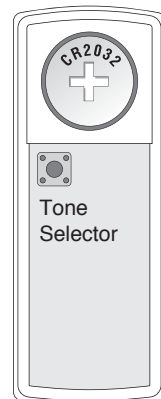
Tone Set Up

The tone selector is a small black button located inside the Push Button unit, below the battery compartment, marked with the letter "S".

The tone is pre-set at the factory to the "Westminster" chime. If you wish to change it to one of the other seven tones, press and release the button and a tone will be heard from the Door Chime unit. Continue pressing and releasing the button until the desired tone is heard.

The last one heard is the one retained in the units memory.

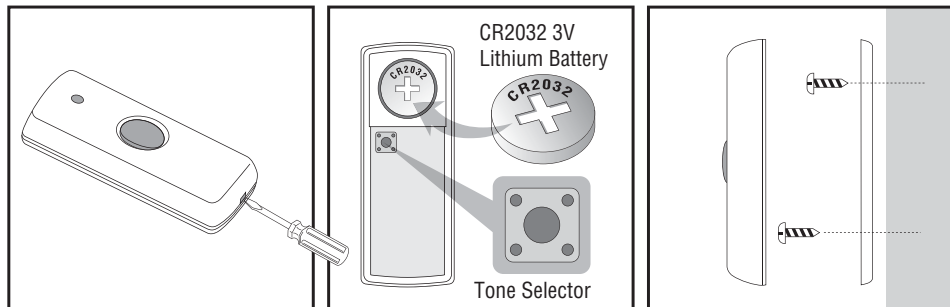
- | | |
|------------------------|-----------------------|
| 1. Westminster | 5. Banjo on my knee |
| 2. Ding Dong Ding Dong | 6. Twinkle Twinkle |
| 3. Telephone | 7. It's a small world |
| 4. Circus Theme | 8. Dog barking |



Push Button Unit

To change the battery

1 x 3 volt Lithium battery (CR2032) has been installed. Your Push Button is ready to use.



Remove the back cover by using a small, flat screwdriver to push in the tab on the bottom. Lift out the old battery and insert 1 x 3 volt Lithium battery (CR2032), ensuring the positive (+) side is facing you. Then re-fit the back plate.

To mount

Use the double sided pad supplied. Alternatively punch out the two holes on the back plate and use this as a template to mark the fixing position. Drill holes and secure the back plate with the screws and wall plugs supplied. Fix the front onto the back plate.

Caution - Do not punch out the holes if the screw fixings are not to be used, as this will affect the weather resistance of the unit.

Channel Set Up

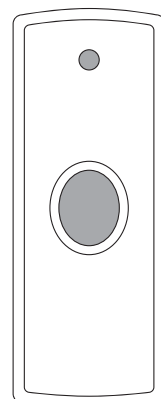
The unit comes from the factory on a pre-set channel. However should your door chime activate intermittently or for no apparent reason, it is possible that another unit is operating nearby on the same channel.

To change the channel

The door chime has a self learning channel feature so no adjustments are required. Simply remove the batteries from the Chime Unit, and leave to rest for 60 seconds. Remove and re-insert the battery in the Push Button. Put the batteries back into the Chime unit or plug the Chime Unit back in, (depending on the type of Door Chime you have) and a double beep will be heard.

Press the Push Button to confirm the new code is working.

Should you need to change channels, this process can be followed many times as there are over 250 different channels available.



Using Two Push Buttons with Different Tones

If you have purchased this Push Button to be used on the back door for example, you can set different tones for the back door and front door. To do this, simply "pair" the new Push Button with the existing Chime Unit (as described in Channel Set Up). Set the tone of the new Push Button to a different tone, (as described in Tone Set Up above). This will now ring your Chime Unit with your chosen tone for the front or back door.

Using Two Door Chimes Independently of Each Other

Should you purchase an additional Door Chime which needs to work independently to your original Door Chime please follow the steps below.

Remove all batteries from **both** Chime Units. To pair the first set, simply insert the batteries in one Chime Unit and press one Push Button. Wait 5 minutes before attempting to pair the second set of unit.

After this time has elapsed, insert the batteries into the second Chime Unit and press the second Push Button. The second Chime Unit will ring. It is important to wait a further 5 minutes before pressing the first or second Push Button again.

Important

The Wire-Free Bell Push is a sensitive electronic product and the following precautions should be followed:

- If leaving the Push Button for long periods, remove the battery and store safely.
- Do not drop or subject unit to excessive blows.

Important note: There are no user serviceable parts to the unit; do not attempt to open the unit to effect repairs.

Warranty: This unit is guaranteed against faulty parts or workmanship for a period of one year from date of purchase.

The guarantee does not cover batteries, damage caused by battery leakage, damage caused by incorrect installation, or physical damage to the casing.

This guarantee does not affect your statutory rights.

Specification

Push Button unit

Power : 1 x 3 volt Lithium battery CR2032 (included)
Consumption : 9.0mA - ON / 0.003mA - OFF



This product is supplied with 1 x CR2032 Lithium battery. It should be removed prior to disposal of the Bell Push.

Help the environment by disposing of your product and battery responsibly. The wheelie bin symbols indicate the product and batteries must not be disposed of in the domestic waste as they contain substances which can be damaging to the environment and health.

Please use designated collection points or recycling facilities when disposing of the item or batteries.

More information can be found on: <http://www.recycle-more.co.uk>; www.recyclenow.com

R2 Device - device where the sound output is created by the initial operation of the control and where the period of sound output continues for designed duration irrespective of condition of the control.

Uni-Com (Global) Ltd.
1 & 2 Enterprise Way
Edenbridge
Kent
TN8 6EW



Symbol  indicating separate collection for electrical and electronic equipment.

Made in China



CE0681